

Datasheet

Product Name: waveguard connect cap, 22 channels, 10/20, unshielded, DB25

Product Code: CS-312.s1

Product Version: 2

waveguard™ connect



Manufacturer: eemagine Medical Imaging Solutions
Gubener Str. 47
10243 Berlin
Germany
Phone +49 (0)30 2904 8404
Fax +49 (0)30 2904 8405
E-Mail support@eemagine.com
Web www.eemagine.com

Quality Control Form Serial nr: Product testing passed: Date: Signature:

Size (circle): I C S M L

(above row only applicable for caps - for available sizes - otherwise delete)

Classification: CE class I

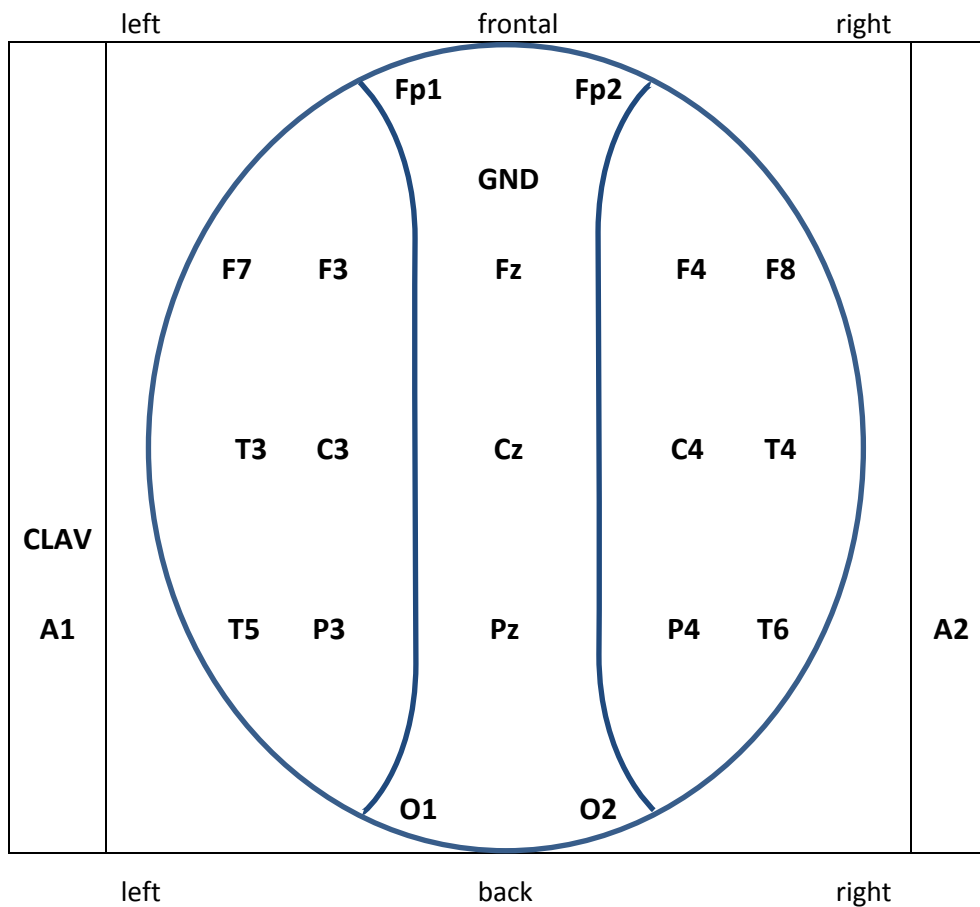
Compatibility: eVox system, evoke neuroscience
Please be aware that the electrode labeling of DB25 to 23 touch proof adapter [XC-301] is not compatible with CS-312.

Description: **waveguard** connect EEG cap, 22 electrodes plus GND. CLAV/ECG, A1 and A2 as Sn drop-lead ring electrode. Cap includes two ear-clips modules (XE-391). 1x DB25 Male connector, 1.5 m unshielded cable.

Available sizes: s1: 07 = Infant, 08 = Child, 09 = Small, 10 = Medium, 11 = Large

Specification

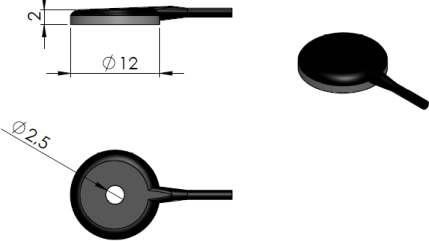
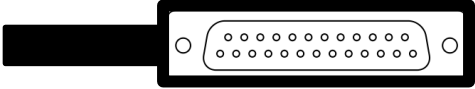


Cap Layout:



Electrode	Length [cm]	Color	Remarks
CLAV/ECG ■	40	Red	ca. 2 cm above left ear clip, with red shrink tube.
■ A1	20	Black	ca. 3 cm above left ear clip, at rear of ear slit.
● A2	20	Black	ca. 3 cm above right ear clip, at rear of ear slit.

Pinning:

Pinning Scheme, Connector 1				
Channel Number	Electrode	Pin numbers		Comments
1	Fp1	1		
2	Fp2		14	
3	F3	2		
4	F4		15	
5	C3	3		
6	C4		16	
7	P3	4		
8	P4		17	
9	O1	5		
10	O2		18	
11	F7	6		
12	F8		19	
13	T3	7		
14	T4		20	
15	T5	8		
16	T6		21	
17	GND	9		
18	Cz		22	
19	Fz	10		
20	Pz		23	
21	A1	11		Drop-lead Sn ring electrode
22	A2		24	Drop-lead Sn ring electrode
23	CLAV/ECG	12		Drop-lead Sn ring electrode incl. red shrink tube
-	-		25	
-	-	13		

		Notes
GND	GND is located at AFz position, labeled GND.	
Drop-leads	 <p>Sn ring electrode:</p>	
		Cabling
Cable length	1.5m	
Cable	unshielded	
		Connector
Connector type	DB 25	
Connector gender	Male	
Connector cable exit	90° cable exit	
		
		Other Components:
Ear-clip	<p>Two ear-clip holders for drop-lead ring electrodes:</p>  <p>Connection to compatible products:</p>  <p>Push the ring electrode horizontally into the holder. Depending on the application, the electrode cable can face different directions. Do not detach the electrode by dragging on the electrode cable.</p>	

Warning:



Proper use of the **CS-312.s1** depends on careful reading of all instructions including the **CS-XXX waveguard connect caps** descriptions and labels that come with or on the devices. Inaccurate measurements may be caused by incorrect use of the device. Non-compliance with warnings and safety regulations may result in severe personal injury and total loss of equipment.

Disclaimer: We have attempted to write this document as accurately as possible. However, mistakes are bound to occur, and we reserve the right to make changes to the products, which may render parts of this document invalid. No part of this document may be copied or reproduced without the explicit permission of the authors.