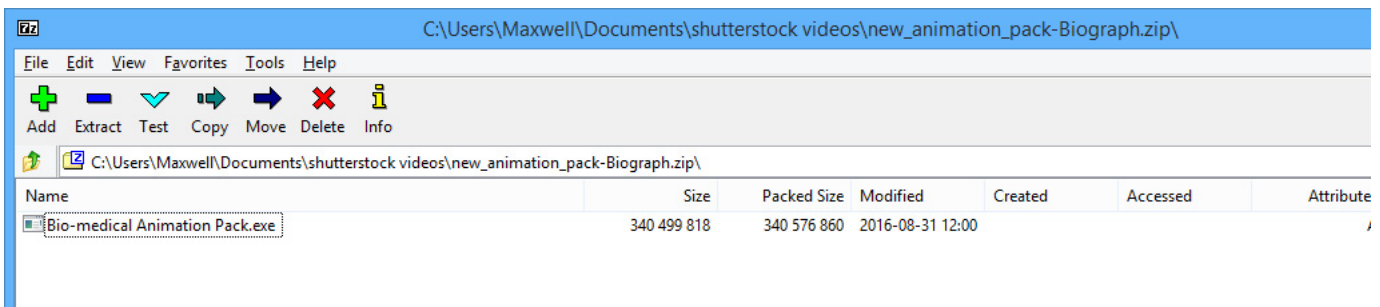


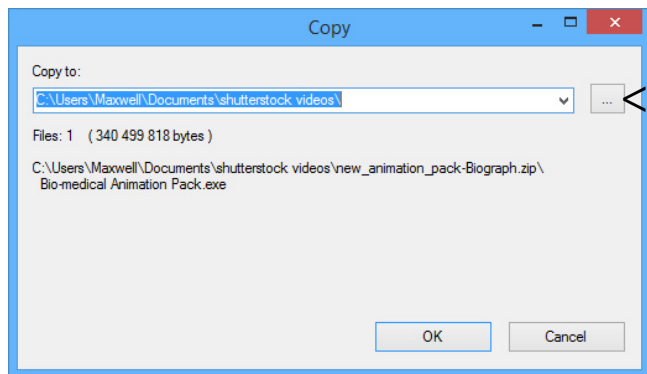
Installing your new animation pack for **Biograph Infitniti**

1. Download the zip file “new_animation_pack-Biograph.zip”
2. Double click the zip file to open your default zip file extraction program



**Your extraction program may look different*

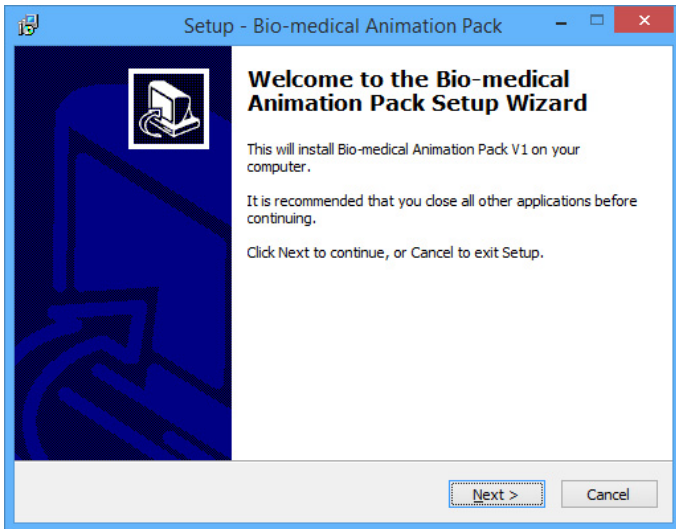
3. Click the “Extract” button at the top of the program window
4. Choose a folder to place the extracted file



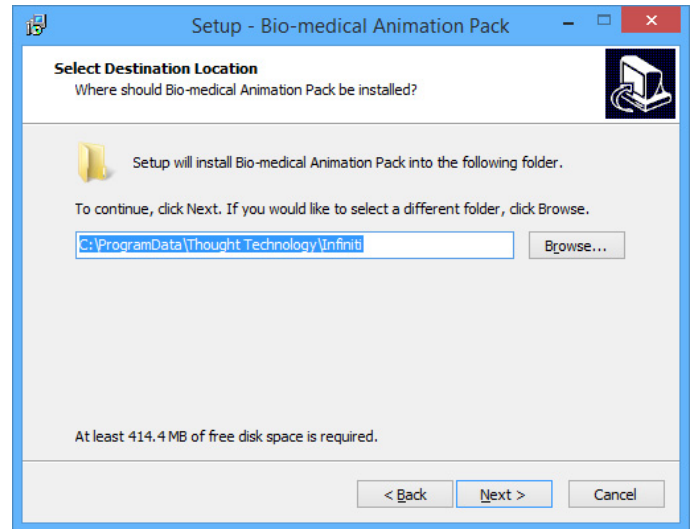
-----*Click here to choose a folder then click ok

5. Navigate to the folder you placed the file in and double click “Bio-medical Animation Pack.exe”

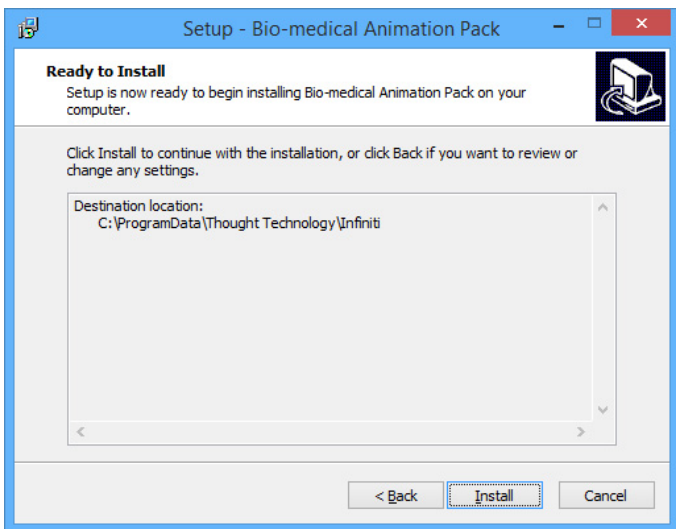
6. Follow the on screen instructions



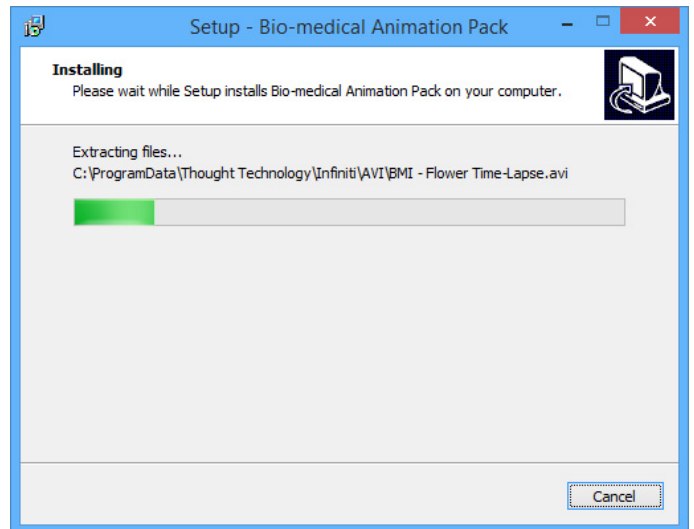
**Click next*



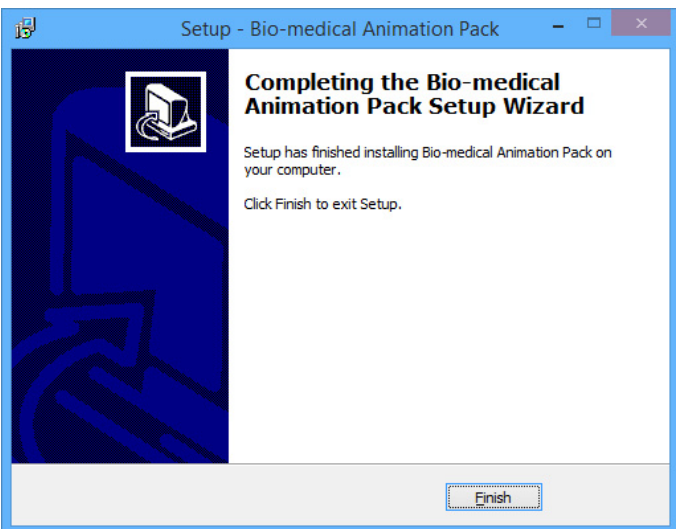
**Click next*



**Click install*



**Wait for install to finish*



**When the installation finishes, click "Finish"*

7. After you have installed your new animations you can delete the .zip and .exe files if you want to.

8. To use the animations in Biograph, just right-click on an existing animation and select “Edit Instrument Settings”. Your new animations will appear in the list.

**animation file names are prefixed with “BMI”*



bio-medical.com

