

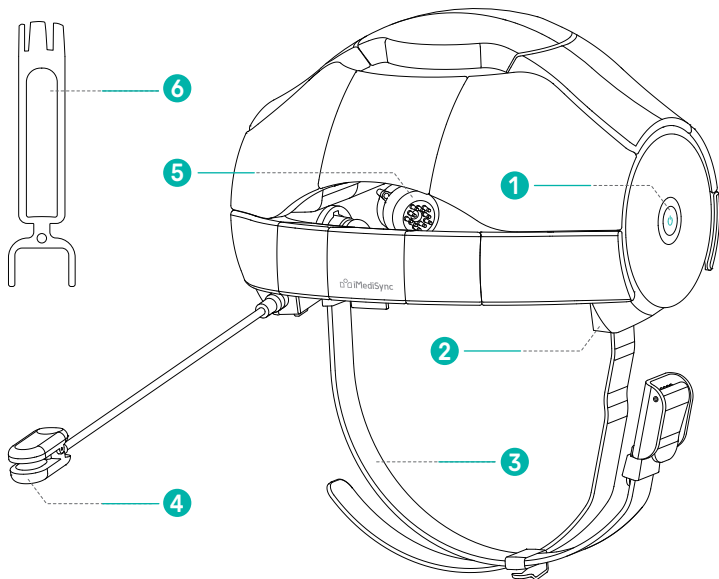
iSyncMe & iSyncWave2

Quick Manual

iSyncWave Components





L
(Left)

R
(Right)



iSyncWave Component Glossary

1 Power Button

Function	Operation	LED	State
Power On	Hold for three seconds	on	 Green: 30% charged  Magenta: less than 30% charged
* When the battery is less than 10% the app will alert you			
Charging	USB-C connection	on	 Green: 100% charged  Magenta: less than 100% charged
* Approx. 7 hours available when charging for 132 minutes			
Measurement		off	
Power Off	Hold until LED blinks (>2 seconds)	off	* Automatic shutdown after 10 minutes if not used

2 **USB-C charging port** USB C Connector terminal

3 **Chin Strap** Strap for securing the iSyncWave

4 **Reference Electrode** Reference electrode ear clip
* Make sure to disconnect the auxiliary ear clip before storing the device to avoid damage to the device or accessories

5 **Electrode** Electrode for measuring brain activity through the scalp

6 **Electrode tool** Tool to replace brush electrodes

※ The product shape can be changed to improve the quality without notice.

※ Cause **iSyncMe** and **iSyncWave** are the same product, they will be referred to as **iSyncWave** in the description below.

STEP 1 Measurement Preparation

1



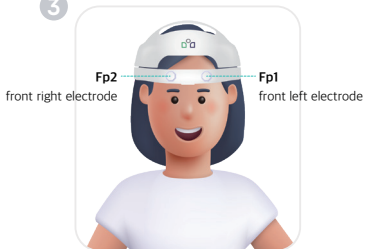
Remove all accessories before taking a measurement. (Please avoid coffee or heavy drinking for 24 hours)

2



It is strongly recommended to clean the forehead and earlobes.

3



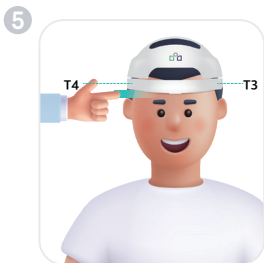
While looking straight ahead place Fp1 & Fp2 electrodes (shown above) on the forehead. Place the device on from front to the back as if you are combing your hair.

4



Ensure that the front electrodes are approximately one finger (1/2inch) from your eyebrows.

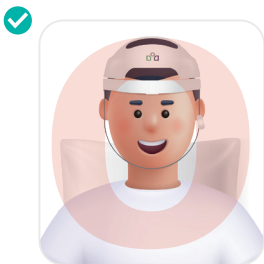
STEP 1 Measurement Preparation



Ensure that T3 & T4 electrodes are approximately one finger -width (~1/2 inch) above the tops of the ears.

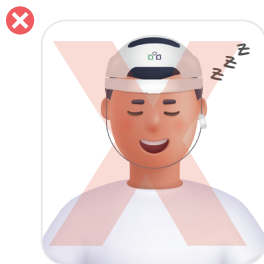


Attach the reference electrode to the earlobe with the label facing forward then secure the chin strap.



[Upright Posture]

It is recommended to sit in a comfortable vertical posture without straining your neck muscles.

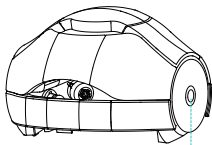


[Caution]

Be careful not to fall asleep during a measurement.

STEP 2 Starting the App

1 iSyncWave ON



Press the power button

iSyncWave. A blue light will appear and depending on the power level the light will change to a green or a red light.

2 Starting APP



Can be downloaded from the  Google Play Store

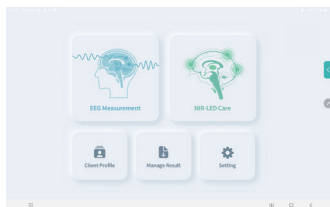
Open the iSyncWave or iSyncMe App on a compatible tablet.

3 Log in



Log in to the app using your ID and password.

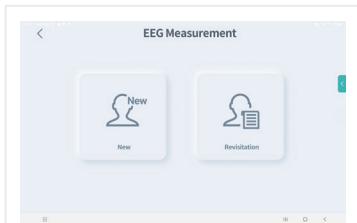
4 Selecting brain wave measurement



Select EEG Measurement.

STEP 2 Checking the impedance before the measurement

5 Selecting a client



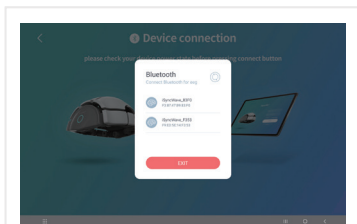
Select new for adding a client. Select re-visitation for previously existing clients.

6 App & device connection



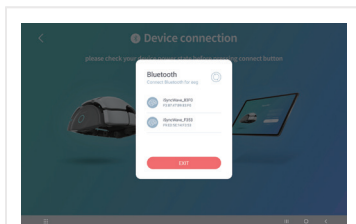
Turn on iSyncWave device. On the tablet select the bluetooth (📶) to connect.

7 Device connection



On the tablet's connection screen, select iSyncWave to connect.

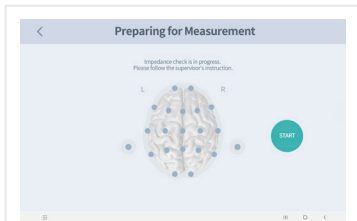
8 Connection error



If the iSyncWave is not visible or not connected, press the refresh (🔄) at the top right of tablet and make sure iSyncWave is turned on.

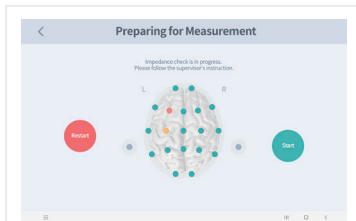
STEP 3 Checking impedance

1 Measurement preparation 1



Select the "START" button to check the impedance.

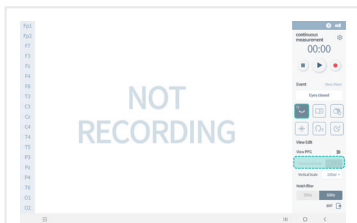
2 Measurement preparation 2



For best signal quality, continue to the next screen only when electrodes are not in the red state.

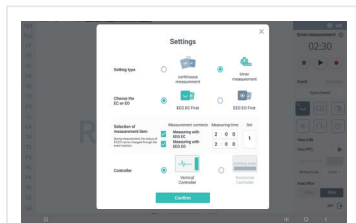
- Ensure the electrodes are well attached to the scalp.

3 Confirming the signal state



Before recording the measurement
Select the "Play" button on the top right to check EEG signal quality.

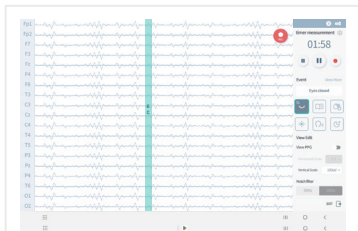
4 Check measurement settings



Select the "Settings" (⚙️) in the upper right corner to choose continuous measurement* or timer measurement*

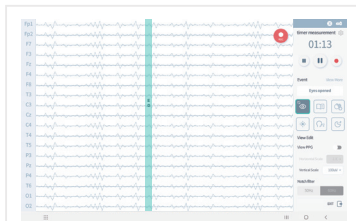
STEP 4 Brainwave measurement

1 Eyes closed measurement



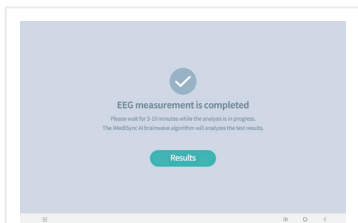
When settings are correct, close your eyes and then select the record button (●) to start the measurement.

2 Eyes open measurement



When the timer has completed open your eyes for the remainder of the recording.

3 Completing the measurement

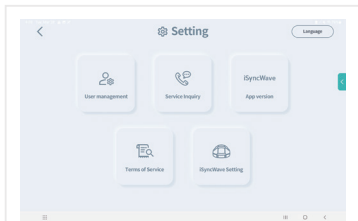


Analyzes the results.
Select "Results" Analysis of the results takes about 10 minutes.

- **Continuous measurement:**
A measurement without a time limit
- **Timer measurement:**
A measurement for a set amount of time Default is 2 minutes and 30 seconds

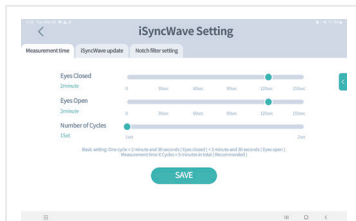
iSyncWave

1 Setting menu



User management | Service inquiry |
App version | Terms of service |
iSyncWave setting

2 iSyncWave Setting



Setting the time for eyes closed |
Setting the time for eyes open |
Setting the number of cycles

3 Cleaning iSyncWave * Electrode cleaning is recommended after every measurement.

- Make sure the iSyncWave LED is turned off before cleaning. If the power is on, press and hold the power button for about 3 seconds to power off the headset.
- The electrodes and the inside of the iSyncWave come into contact with skin or hair, so clean them after each use. At this time, do not use ammonia, acetone or other solvents (corrosive/abrasive detergents) for cleaning. (Do not use detergents and liquids)
- Brush/ Flat Electrodes and LEDs: Gently clean the surface of the electrodes with a very soft brush such as a makeup brush.
- Exterior: clean using a soft cloth such as cotton or gauze.
- Excessive bending of the brush electrode during the cleaning process or excessive cleaning with other solvents causes wear of the electrode and shortens the lifespan of the electrode.

Electrode replacement reference

1 Electrode (Brush / Flat) component quality



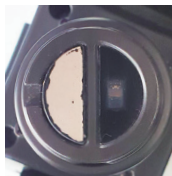
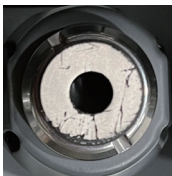
Excellent

Brush

The electrode coating is intact

Flat

The electrode coating is intact



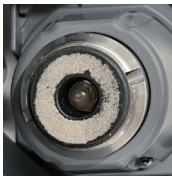
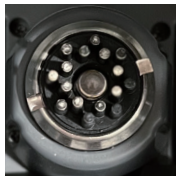
Good

Brush

Less than 2 electrode coatings are peeled off

Flat

Less than 1/3 of electrode coating is peeled off



Replacement suggested

Brush

More than 3 electrode coatings are peeled off

Flat

More than 1/3 of the electrode coating is peeled off

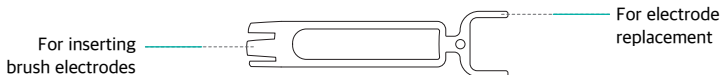
Electrode replacement reference

2 Precautions when using iSyncWave

- a) After approximately 180-200 uses of iSyncWave, electrodes may need to be replaced.
(Refer to page 24 and replace if worn prematurely)
- b) After using the iSyncWave, please thoroughly clean the electrodes.
(If the electrodes are not cleaned, it may cause premature wear.)
- c) Use only iMediSync's electrodes to maintain product specifications.
- d) The surface of the electrode should be gently cleaned with a very soft cloth or brush.

3 How to replace electrodes

- a) Remove the electrodes by gripping the sides of the electrode base and pulling the electrode out.
- b) Push the electrode into the metal ring until it is secure.
For brush electrodes use the black side of the electrode tool to push the electrode in place without damaging the electrode coating.



Electrode Tool

Customer Support

1 Please check the following items before requesting customer support for equipment problems

- a) Try reconnecting Bluetooth and Wi-Fi.
- b) Try powering the tablet off and on.
- c) Check that the app is up-to-date.
- d) When a malfunction of the equipment is suspected, reset the equipment by turning the power button off for 15 seconds and then on again.
If the same symptom still occurs, please contact iMediSync customer support team (C/S).
- e) We provide a one-year free warranty from the date of purchase for equipment failures that occur under normal conditions. [However, iSyncWave is not under warranty if the customer arbitrarily disassembles, remodels, or replaces consumable parts. It is also not under warranty if malfunctions are due to negligence such as submersion, external damage, etc..]

※ This warranty promises free repair under the period and conditions specified herein. Therefore, this warranty does not limit the customer's legal rights. If you have any questions about repairs after the warranty period, please contact iMediSync customer support team (C/S).

Customer Support

2 Product Warranty

Product name:

Model name:

Product number(S/N):

Purchasing date:

Purchasing place:

Guaranteed period: one year from the purchasing date

Customer information: (company name)

(name)

(contact number)

This product was released after strict quality management and testing.

Manufacturing request and seller: iMediSync Inc.

Head office: iMediSync, 15F, 411, Teheran-ro, Gangnam-gu, Seoul, Republic of Korea, 06160

E-mail: cs@imedisync.com

